

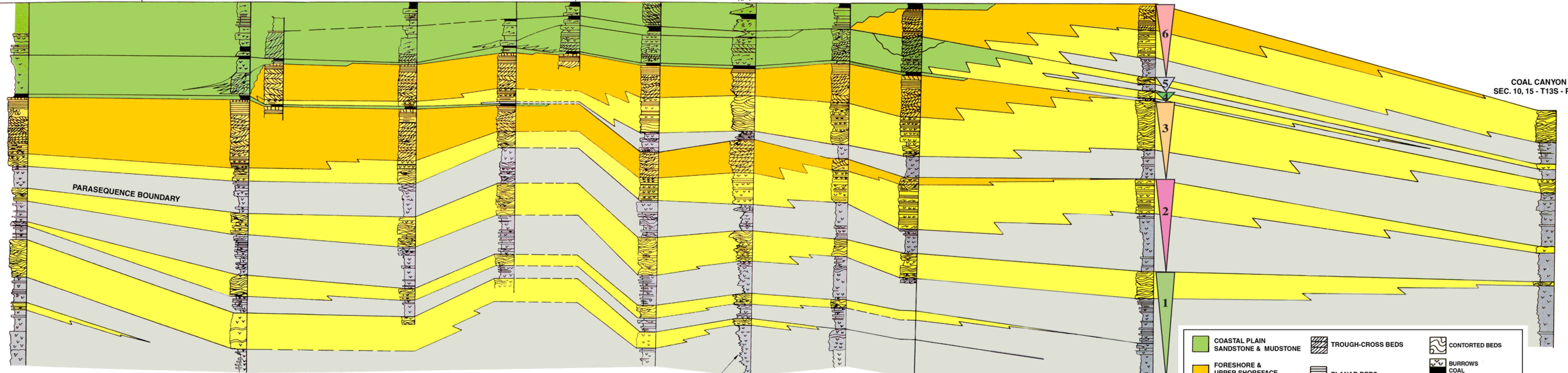
WEST

EAST

GILSON GULCH SEC. 8 - T13S - R9E SPRING CANYON SEC. 15 - T13S - R9E WEST GENTILE WASH SEC. 2 - T13S - R9E WEST HIGHWAY 6 SEC. 1 - T13S - R9E EAST HIGHWAY 6 SEC. 1 - T13S - R9E TRAMWAY SEC. 1 - T13S - R9E EXXON PROD. RES. CO PRICE RIVER COAL NO. 3 SEC. 6 - T13S - R10E PANTHER CANYON NO. 1 SEC. 7 - T13S - R10E PANTHER CANYON NO. 2 SEC. 7 - T13S - R10E KENNILWORTH SEC. 6 - T13S - R10E

THIS CONTACT ILLUSTRATED IN FIG. 8 (Van Wagoner et al 1990)

6 GR 130
AP



(Redrafted by C. G. St. C. Kendall, 2003)

THE CURVE OUTLINE IS FROM THE GAMMA-RAY LOG. FACIES ARE FROM CONTINUOUS CORES.

Solution to Exercise #3 that defines the parasequence stacking exposed in the clastic outcrops of the Book Cliffs near Helper, Utah. Illustrates a progradational parasequence set for the Blackhawk Formation, Spring Canyon Member (Campanian) (after Van Wagoner et al, 1990).

COASTAL PLAIN SANDSTONE & MUDSTONE	TROUGH-CROSS BEDS	CONTORTED BEDS
FORESHORE & UPPER SHOREFACE SANDSTONES	PLANAR BEDS	BURROWS COAL ROOTS
LOWER-SHOREFACE & DELTA-FRONT SANDSTONES	HUMMOCKY BEDS	25 FEET 0.5 MILES
SHELF MUDSTONES	CURRENT-RIPPLE BEDS WAVE-RIPPLE BEDS	